
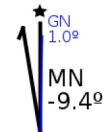
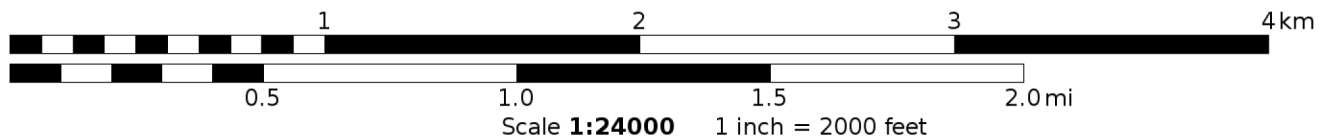


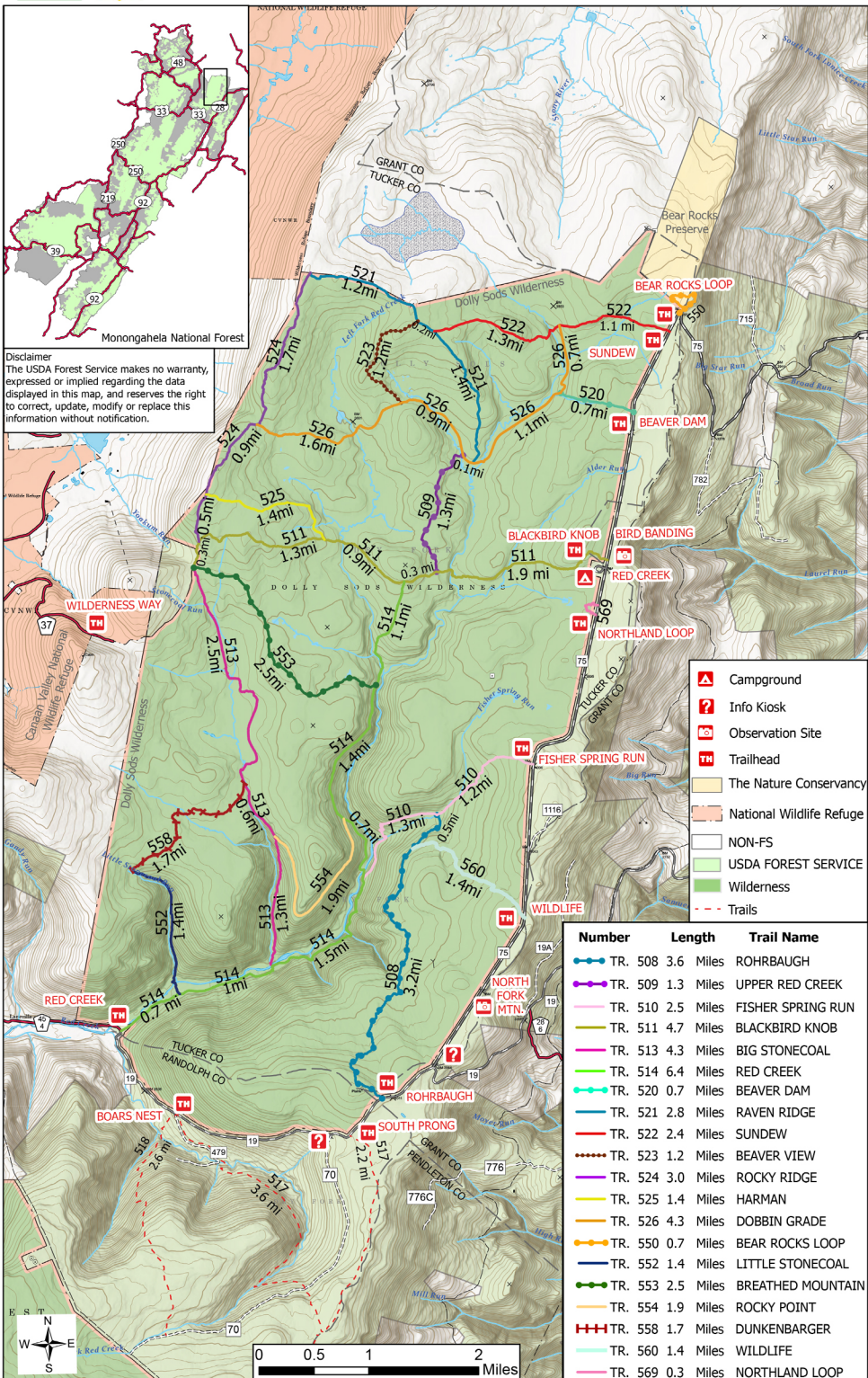
Mercator Projection  
 WGS84  
 UTM Zone 17S  








# Dolly Sods Wilderness Trails



Location	Distance (leg)	Gain (leg)	Loss (leg)	Distance (overall)	Gain (overall)	Loss (overall)	Day	Start Time	Duration	Clock Time
Red Creek TH to Dunkenbarger Tr/552 via RC Tr/514	0.59	64	-0	0.59	64	-0	Friday	1:00:00 PM	0:23:36	1:23:36 PM
Continue Red Creek Tr/514 to Big Stonecoal Tr/513	0.96	140	-17	1.55	204	-17	Friday	1:23:36 PM	0:38:24	2:02:00 PM
Continue Red Creek Tr/514 to Fisher Spring Run Tr/510	1.43	278	-65	2.98	482	-82	Friday	2:02:00 PM	0:57:12	2:59:12 PM
Continue Red Creek Tr/514 to Campsite	0.09	0	-9	3.07	482	-91	Friday	2:59:12 PM	0:03:36	3:02:48 PM
<b>Day 1 &amp; Overall Mileage Sub-Total:</b>	<b>3.07</b>	<b>482</b>	<b>-91</b>						<b>2:02:48</b>	
Site to 554/Rocky Point Tr via RCT	0.58	290	-0	0.58	290	-0	Saturday	8:30:00 AM	0:23:12	8:53:12 AM
Left/Right on 554/Rocky Point Tr to Lions Head spur	1.33	277	-0	1.91	567	-0	Saturday	8:53:12 AM	0:53:12	9:46:24 AM
Lion Heads Spur out-n-back	0.25	111	-91	2.16	678	-91	Saturday	9:46:24 AM	0:10:00	9:56:24 AM
Right/North on 554/Rocky Point Tr to Big Stonecoal Tr	0.56	28	-57	2.72	706	-148	Saturday	9:56:24 AM	0:22:24	10:18:48 AM
Left/South on Big Stonecoal/513 to RCT/514	1.21	0	-741	3.93	706	-889	Saturday	10:18:48 AM	0:48:24	11:07:12 AM
RCT to Fisher Spring Run Trail	1.43	278	-65	5.36	984	-954	Saturday	11:07:12 AM	0:57:12	12:04:24 PM
RCT to campsite	0.09	0	-9	5.45	984	-963	Saturday	9:56:24 AM	0:03:36	12:08:00 PM
<b>Day 2, Hike 1: Day &amp; Overall Mileage Sub-Total:</b>	<b>5.45</b>	<b>984</b>	<b>-963</b>						<b>3:38:00</b>	
South on RCT to Fisher Spring Run Tr/510	0.09	9	-0	0.09	9	-0	Saturday	8:30:00 AM	0:03:36	8:33:36 AM
Left/NE on Fisher Spring Run Tr/510 to Rohrbauhn/508 Tr	1.21	491	-10	1.30	500	-10	Saturday	8:33:36 AM	0:48:24	9:22:00 AM
Right/South on Rohrbauhn/508 Tr to Wildlife Tr/560	0.41	56	-0	1.71	556	-10	Saturday	9:22:00 AM	0:16:24	9:38:24 AM
Continue Rohrbauhn/508 to turnaround	0.72	84	-36	2.43	640	-46	Saturday	9:38:24 AM	0:28:48	10:07:12 AM
Rohrbauhn/508 to Fisher Spring Run/510	1.13	36	-140	3.56	676	-186	Saturday	10:07:12 AM	0:45:12	10:52:24 AM
Fisher Spring Run/510 to sketchy spur	0.90	0	-418	4.46	676	-604	Saturday	10:52:24 AM	0:36:00	11:28:24 AM
Sketchy Spur to Campsite	0.24	0	-102	4.70	676	-706	Saturday	11:28:24 AM	0:09:36	11:38:00 AM
<b>Day 2, Hike 2: Day &amp; Overall Mileage Sub-Total:</b>	<b>4.70</b>	<b>676</b>	<b>-706</b>						<b>3:08:00</b>	
Site to Fisher Spring Run Tr/510 via Red Creek Tr/514	0.09	9	-0	3.16	9	-0	Sunday	8:00:00 AM	0:03:36	8:03:36 AM
Continue RCT/514 to Big Stonecoal Tr/513	1.43	65	-278	4.59	74	-278	Sunday	8:03:36 AM	0:57:12	9:00:48 AM
Continue RCT/514 to Dunkenbarger Tr/552	0.96	17	-140	5.55	91	-418	Sunday	9:00:48 AM	0:38:24	9:39:12 AM
Continue RCT/514 to Red Creek Trailhead	0.59	0	-64	6.14	91	-482	Sunday	9:39:12 AM	0:23:36	10:02:48 AM
<b>Day 3 &amp; Overall Mileage Sub-Total:</b>	<b>3.07</b>	<b>91</b>	<b>-482</b>						<b>2:02:48</b>	
<b>Grand Totals without dayhike:</b>	<b>6.14</b>	<b>673</b>	<b>-573</b>						<b>4:06:36</b>	<b>Pace: 1.5</b>
<b>...with Dayhike 1:</b>	<b>11.59</b>	<b>1,557</b>	<b>-1,536</b>						<b>7:43:36</b>	
<b>...with Dayhike 2:</b>	<b>10.84</b>	<b>1,249</b>	<b>-1,279</b>						<b>7:13:36</b>	
<b>First Sunrise</b>	<b>6:33 AM</b>	<b>7:00 AM</b>	<b>6:01 PM</b>	<b>6:28 PM</b>						
<b>Sat 2/22</b>	<b>6:32 AM</b>	<b>6:59 AM</b>	<b>6:02 PM</b>	<b>6:29 PM</b>						
<b>Sun 2/23</b>	<b>6:30 AM</b>	<b>6:57 AM</b>	<b>6:03 PM</b>	<b>6:30 PM</b>						