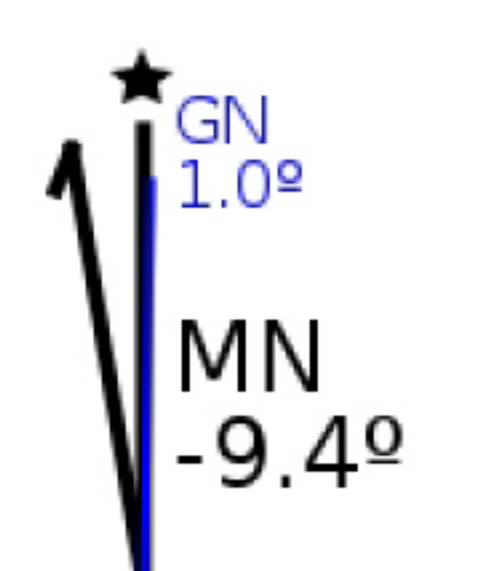
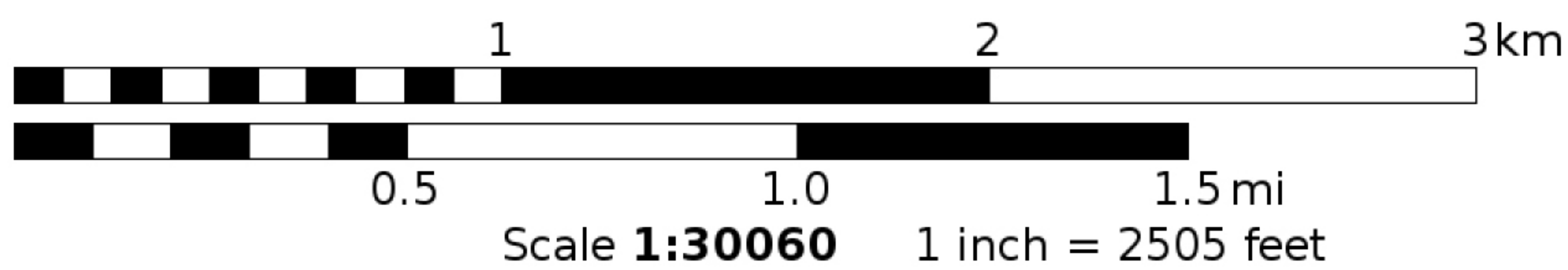
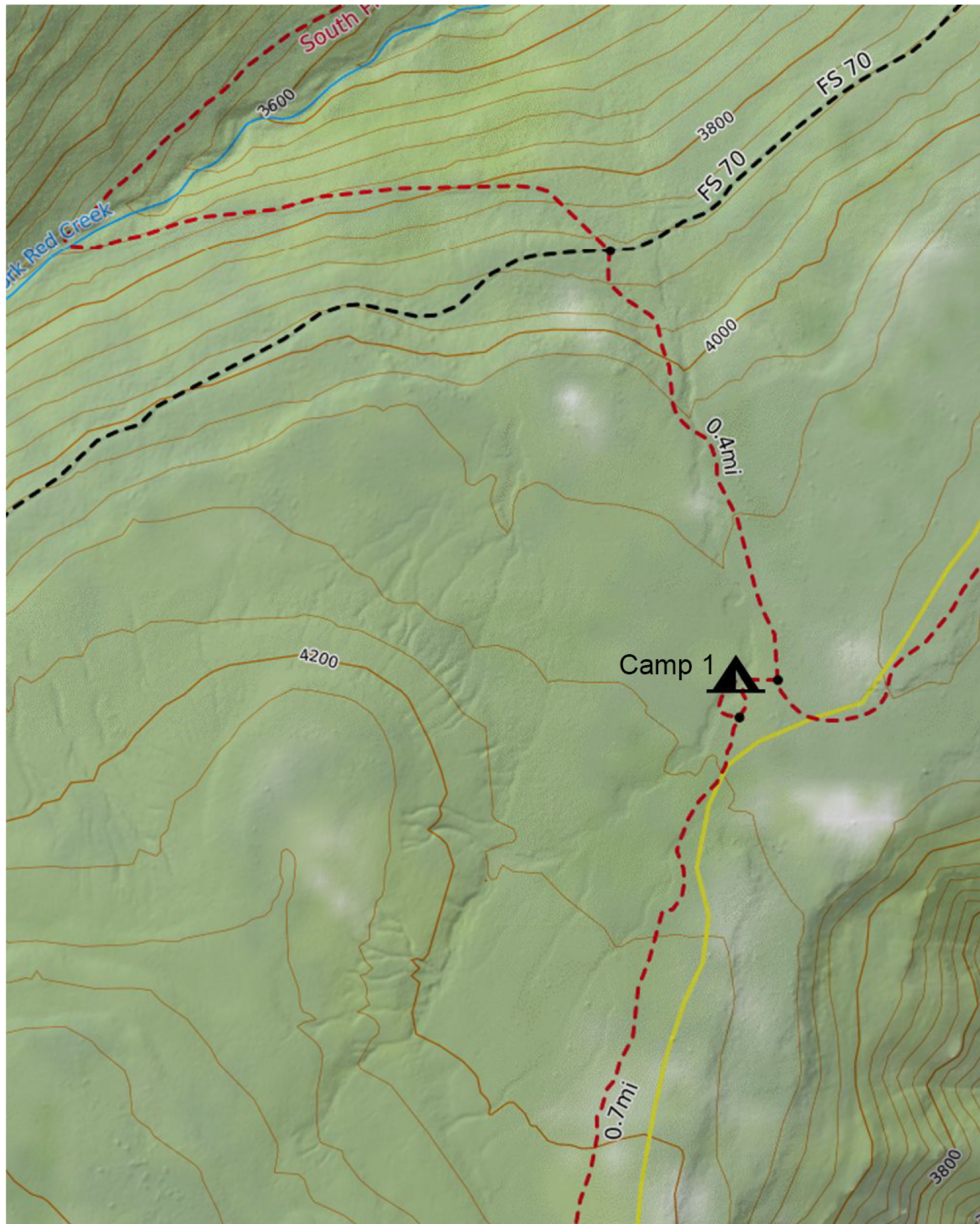
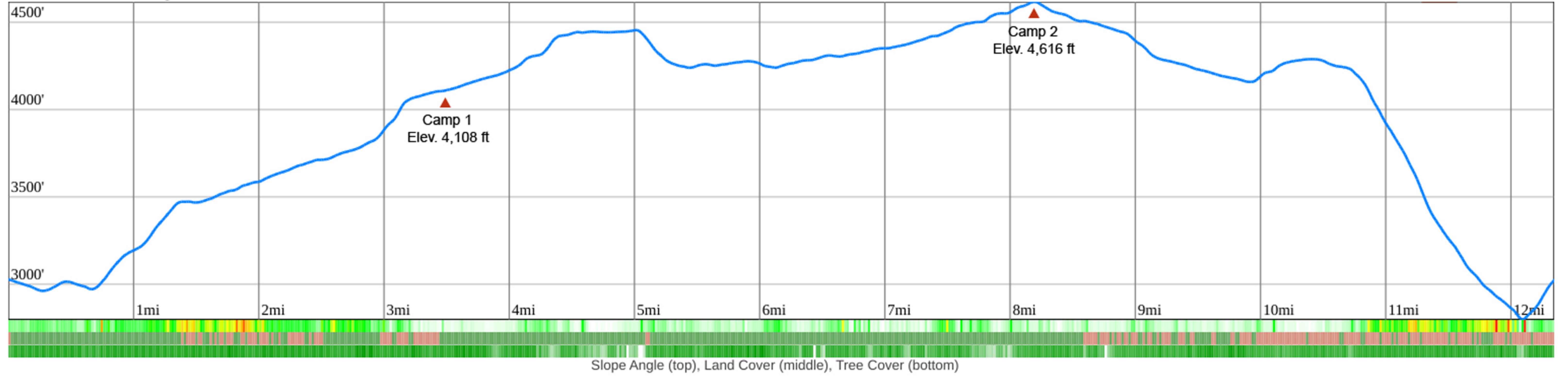


Mercator Projection
 WGS84
 UTM Zone 17S

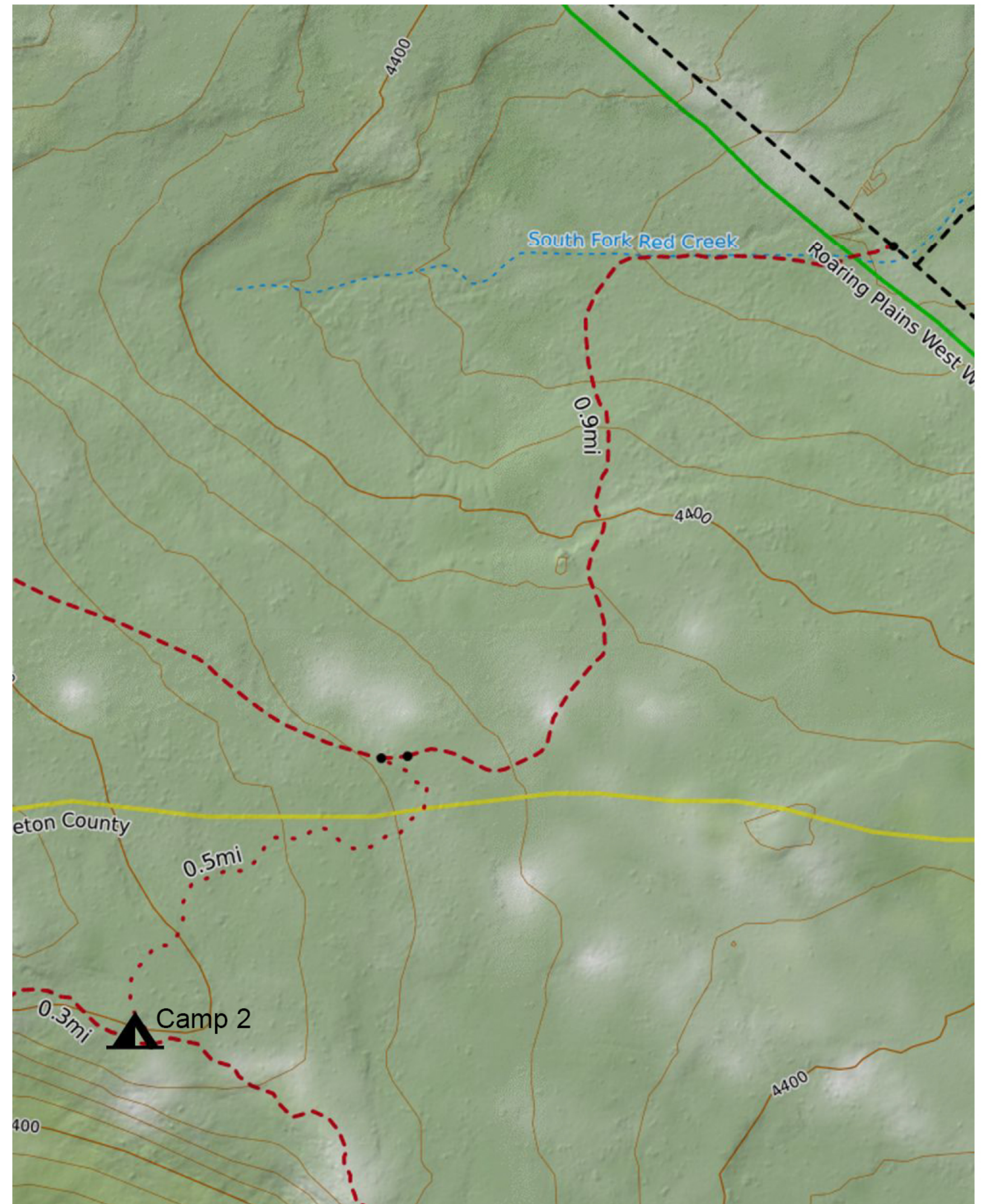



Location	Distance (leg)	Gain (leg)	Loss (leg)	Distance (overall)	Gain (overall)	Loss (overall)	Day	Start Time	Duration	Clock Time Pace: 1.5 mph	Sunrise/S unset
Parking Lot to Forest Road 70 via South Prong	2.99	922	-53	2.99	922	-53	Saturday	1:00:00 PM	1:59:36	2:59:36 PM	6:54 AM
Forest Road 70 to Hidden Passage Campsite 1 via South Prong	0.39	231	-0	3.38	1,153	-53	Saturday	2:59:36 PM	0:15:36	3:15:12 PM	5:08 PM
Day 1 & Overall Mileage Sub-Total:	3.38	1,153	-53	6.37	1,153	-53			2:15:12		
Campsite to Hidden Passage Intersection with Canyon Rim	0.79	220	-0	4.17	1,373	-53	Sunday	8:00:00 AM	0:31:36	8:31:36 AM	6:55 AM
Intersection to Pipeline Swath via Canyon Rim/Unnamed	0.84	9	-96	5.01	1,382	-149	Sunday	8:31:36 AM	0:33:36	9:05:12 AM	
Pipeline Swath to Campsite 2 via Canyon Rim	2.72	457	-76	7.73	1,839	-225	Sunday	9:05:12 AM	1:48:48	10:54:00 AM	5:07 PM
Day 2 & Overall Mileage Sub-Total:	4.35	686	-172	7.73	1,839	-225			2:54:00		
Campsite to Roaring Plains Tr via Tee Pee Tr	0.49	5	-113	8.22	1,844	-338	Monday	8:00:00 AM	0:19:36	8:19:36 AM	6:56 AM
Intersection to Pipeline Swath via Roaring Plains Tr	0.86	0	-283	9.08	1,844	-621	Monday	8:19:36 AM	0:34:24	8:54:00 AM	
Pipeline to Boar's Nest via FR70	0.38	0	-78	9.46	1,844	-699	Monday	8:54:00 AM	0:15:12	9:09:12 AM	
FR70 to South Prong TH via Boar's Nest	2.50	315	-1,476	11.96	2,159	-2,175	Monday	9:09:12 AM	1:40:00	10:49:12 AM	5:06 PM
Day 3 & Overall Mileage Sub-Total:	4.23	320	-1,950	11.96	2,159	-2,175			2:49:12		
Grand Totals:	11.96				2,159	-2,175			Pace: 1.5		

distance 12.35mi range 2799' to 4616' +2340' -2342'



Mercator Projection
WGS84
UTM Zone 17S
CALTPO
Scale 1:10900 1 inch = 908 feet



Mercator Projection
WGS84
UTM Zone 17S
CALTPO
Scale 1:10900 1 inch = 908 feet