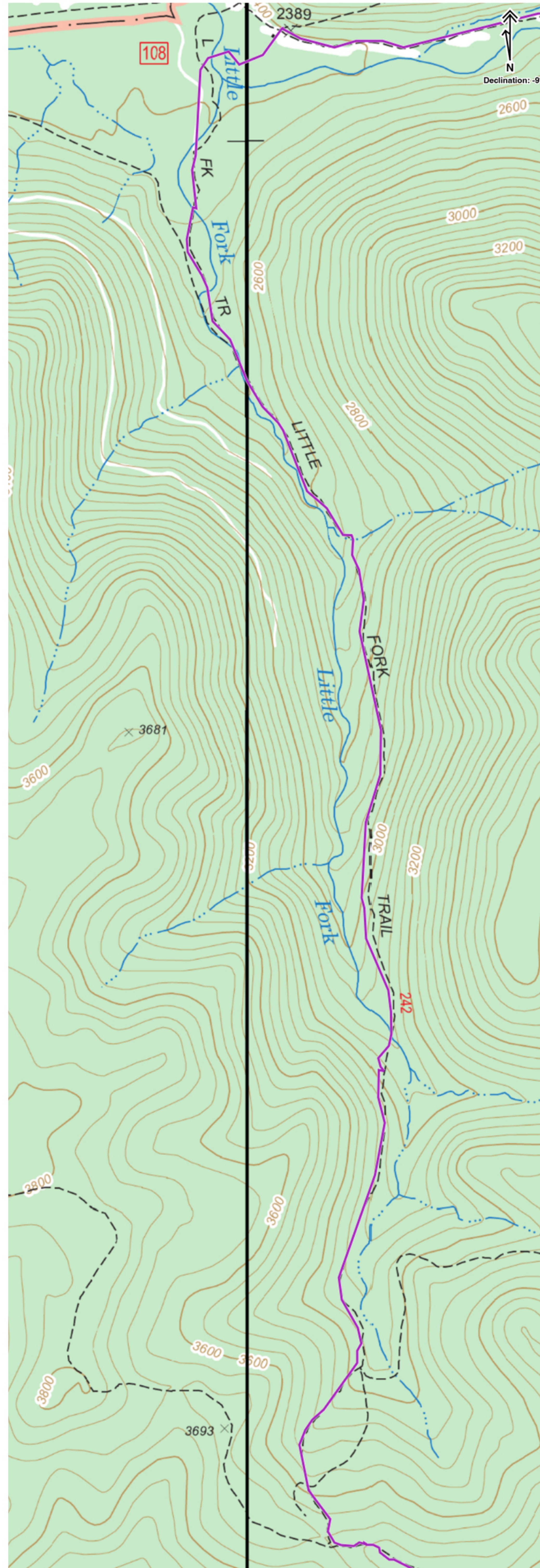
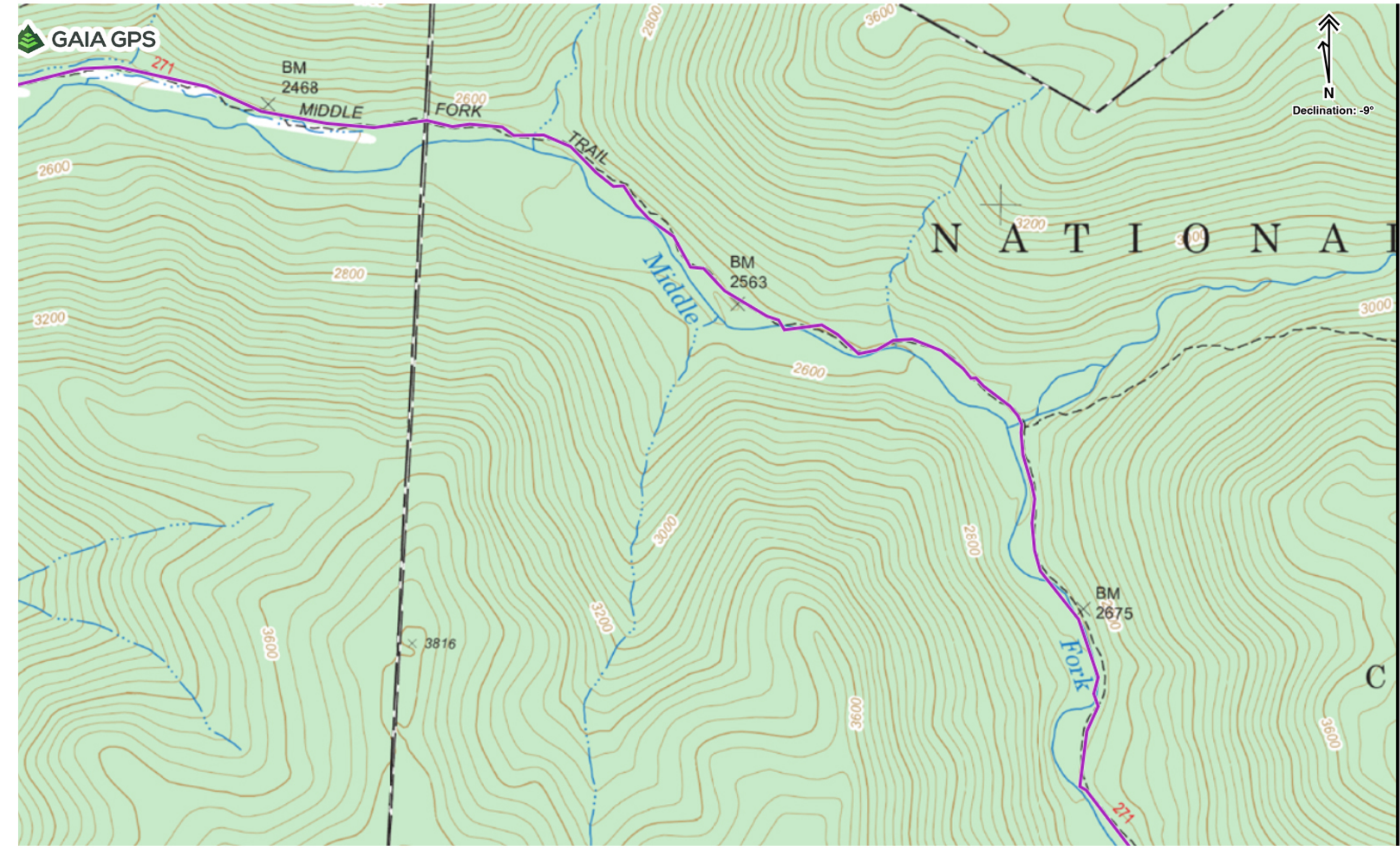


## Map Details

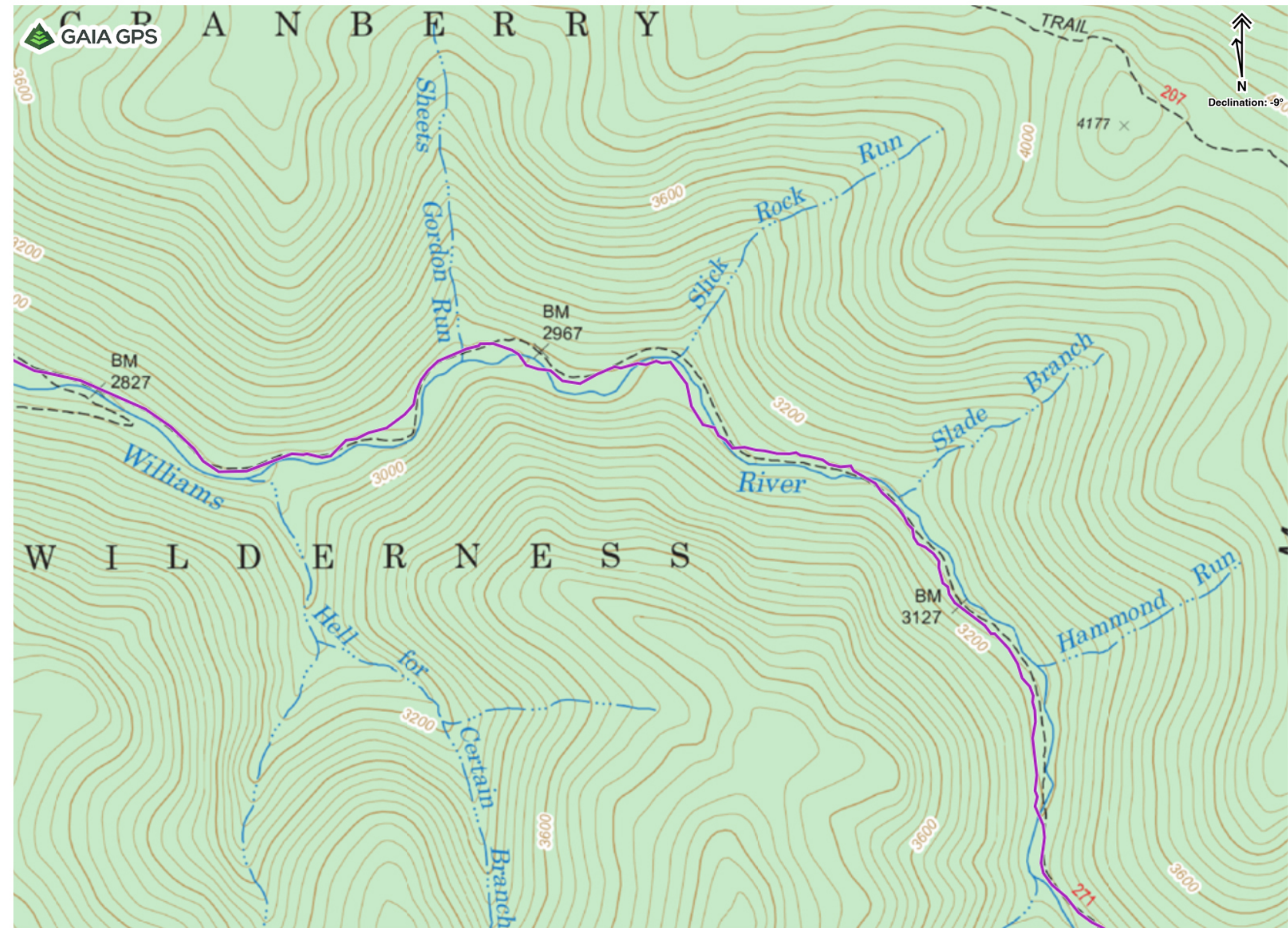
### Little Fork Trail



### Middle Fork Trail: Creek Crossings (miles 14-16.5)



### Middle Fork Trail: Creek Crossings (miles 16.5-19)



Location	Distance (leg)	Gain (leg)	Loss (leg)	Distance (overall)	Gain (overall)	Loss (overall)	Day	Start Time	Duration	Clock Time	Pace: 2 mph	sunrise / sunset
Car via TR688/North South to 4-way INT	0.40	28	-33	0.40	28	-33	Saturday	12:00:00 PM	0:12:00	12:12:00 PM	12:12:00 PM	7:22 AM
Intersection to Camp 1 via TR688/North South	4.43	420	-858	4.83	448	-891	Saturday	12:12:00 PM	2:12:54	2:24:54 PM	2:24:54 PM	6:17 PM
<b>Day &amp; Overall Mileage Sub-Total:</b>	<b>4.83</b>	<b>448</b>	<b>-891</b>	<b>4.83</b>	<b>448</b>	<b>-891</b>						
Camp 1 to Laurely Branch TR INT via TR688	2.62	407	-579	7.45	855	-1,470	Sunday	8:00:00 AM	1:18:36	9:18:36 AM	9:18:36 AM	6:23 AM
Laurely Branch TR INT to Little Fork INT via TR688	1.85	207	-389	9.30	1,062	-1,859	Sunday	9:18:36 AM	0:55:30	10:14:06 AM	10:14:06 AM	
Little Fork INT to Middle Fork TR INT via TR242	3.32	30	-1,333	12.62	1,092	-3,192	Sunday	10:14:06 AM	1:39:36	11:53:42 AM	11:53:42 AM	
Middle Fork TR INT to Camp 2 via TR271	3.76	507	-90	16.38	1,599	-3,282	Sunday	11:53:42 AM	1:52:48	1:46:30 PM	1:46:30 PM	5:16 PM
<b>Day &amp; Overall Mileage Sub-Total:</b>	<b>11.55</b>	<b>1,151</b>	<b>-2,391</b>	<b>16.38</b>	<b>1,599</b>	<b>-3,282</b>						
Camp 2 to North Fork TR INT via TR271	6.23	1,523	-144	22.61	3,122	-3,426	Monday	8:00:00 AM	3:06:54	11:06:54 AM	11:06:54 AM	6:24 AM
North Fork TR INT to 4-way INT	1.13	321	-7	23.74	3,443	-3,433	Monday	11:06:54 AM	0:33:54	11:40:48 AM	11:40:48 AM	
4-way INT to Car	0.40	33	-28	23.01	3,155	-3,454	Monday	11:40:48 AM	0:12:00	11:52:48 AM	11:52:48 AM	5:15 PM
<b>Day &amp; Overall Mileage Sub-Total:</b>	<b>7.76</b>	<b>1,877</b>	<b>-179</b>	<b>24.14</b>	<b>3,476</b>	<b>-3,461</b>						
<b>Grand Totals:</b>	<b>24.14</b>	<b>3,476</b>	<b>-3,461</b>					<b>12:04:12</b>	<b>3:52:48</b>			
									<b>Pace: 2.0</b>			