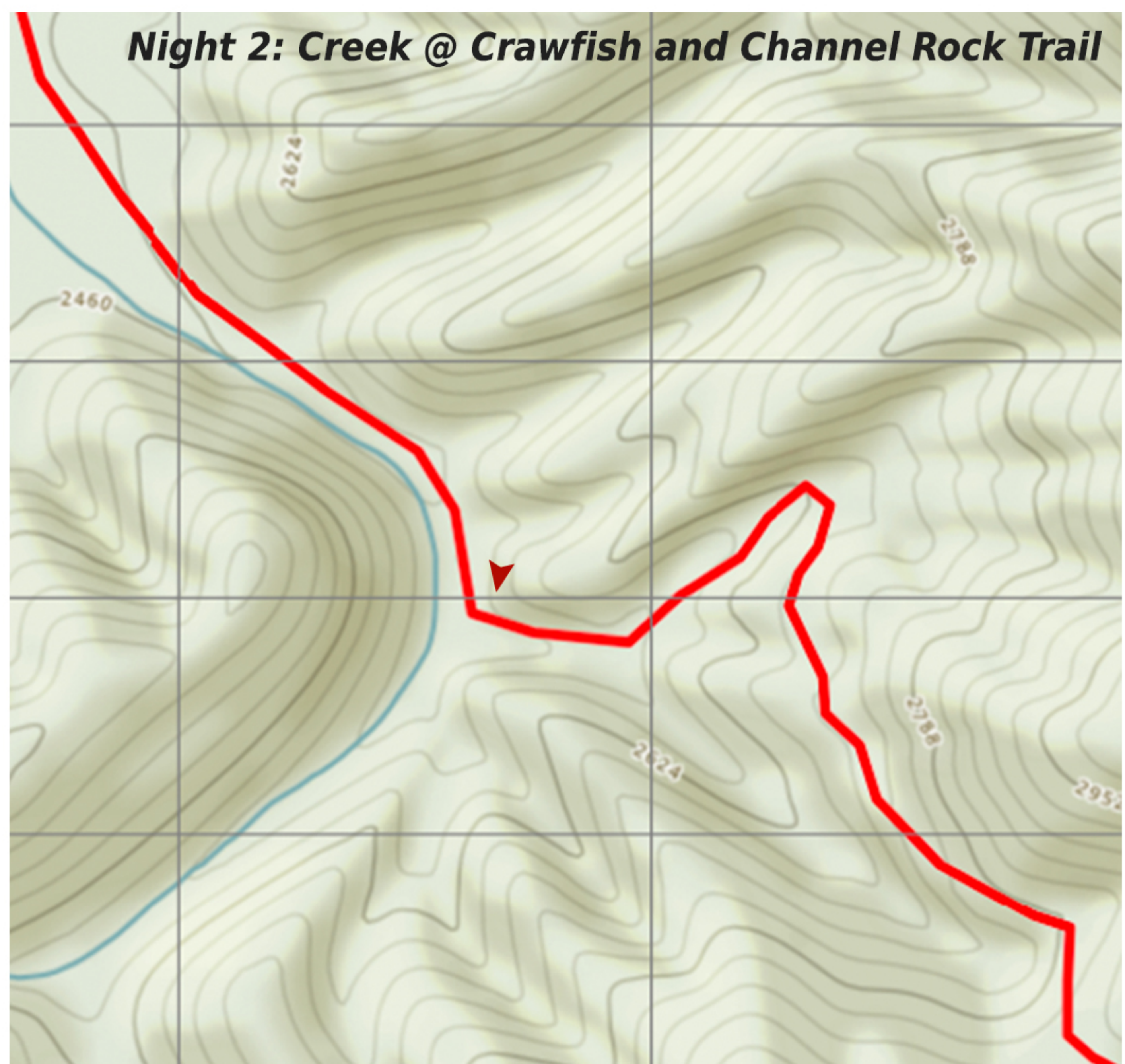
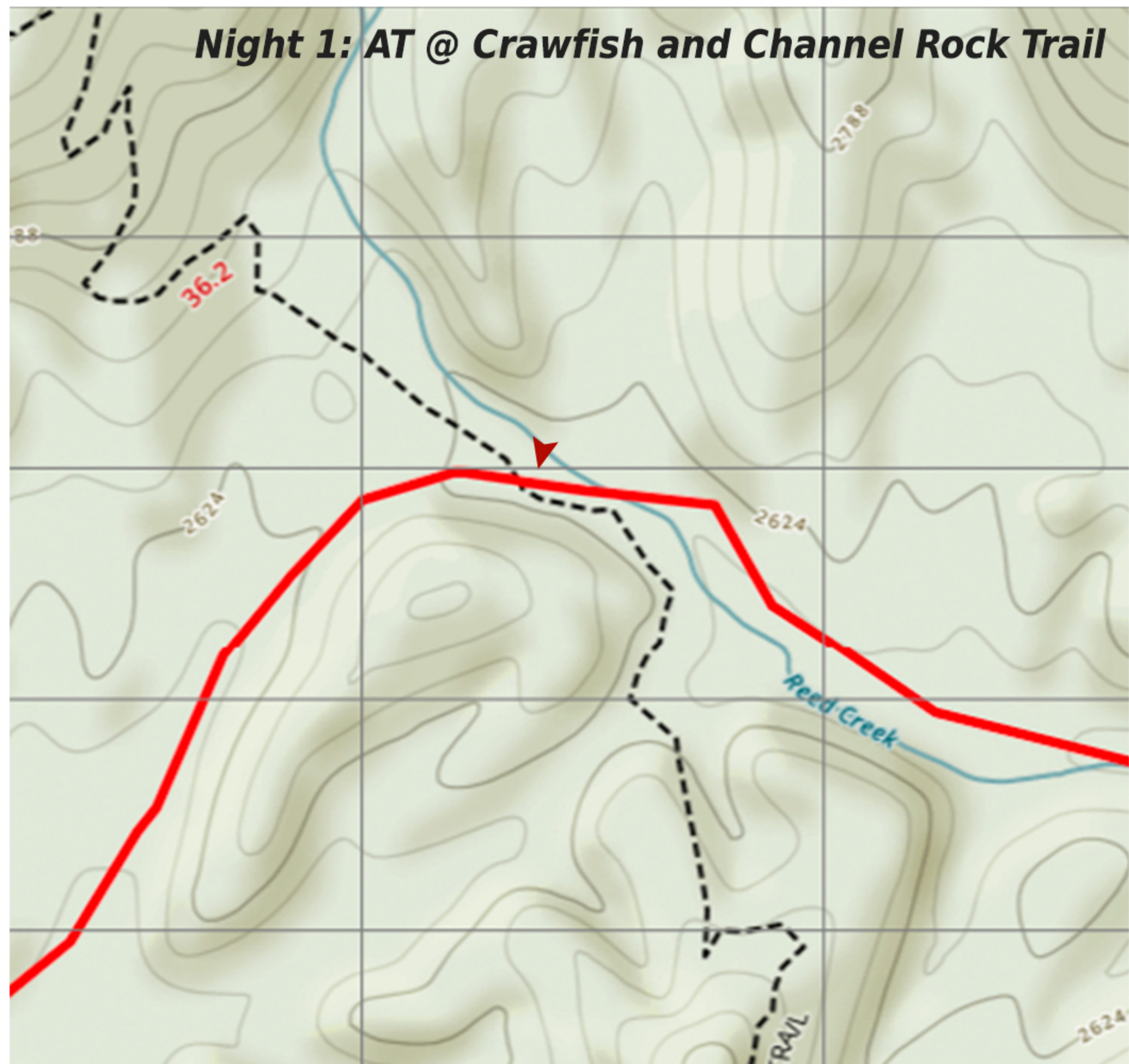


Location	Distance (leg)	Gain (leg)	Loss (leg)	Distance (overall)	Gain (overall)	Loss (overall)	Day	Start Time	Duration	Clock Time Pace: 1.5 mph
Car to CCR Trail via Strawberry Rd	1.93	278	-170	1.93	278	-170	Friday	3:30:00 PM	1:17:12	4:47:12 PM
Crawfish & Channel Rock Trail to AT (Camp 1)	1.56	318	-120	3.49	596	-290	Friday	4:47:12 PM	1:02:24	5:49:36 PM
Day & Overall Mileage Sub-Total:	3.49	596	-290		596	-290				
AT to AT via Crawfish & Channel Rock Trail	2.53	980	-409	6.02	1576	-699	Saturday	8:00:00 AM	1:41:12	9:41:12 AM
AT to CCR Trail	0.68	107	-100	6.70	1683	-799	Saturday	9:41:12 AM	0:27:12	10:08:24 AM
CCR Trail to Little Brushy Mtn	1.36	397	-362	8.06	2080	-1161	Saturday	10:08:24 AM	0:54:24	11:02:48 AM
Little Brushy Mtn to near Groundhog Hill	0.77	193	-348	8.83	2273	-1509	Saturday	11:02:48 AM	0:30:48	11:33:36 AM
CCR Trail to Creek (Camp 2)	1.60	138	-702	10.43	2411	-2211	Saturday	11:33:36 AM	1:04:00	12:37:36 PM
Day & Overall Mileage Sub-Total:	6.94	1,815	-1921		2,411	-2,211				
Creek to Strawberry Rd via CR Trail	0.67	37	-191	11.10	2448	-2402	Sunday	8:00:00 AM	0:26:48	8:26:48 AM
Strawberry Rd to Car	1.17	130	-197	12.27	2578	-2599	Sunday	8:26:48 AM	0:46:48	9:13:36 AM
Day & Overall Mileage Sub-Total:	1.84	167	-388		2,578	-2,599				
Grand Totals:	12.27	2,578	-2,599							Pace: 1.5



Friday, June 30
 Day: Partly cloudy w/scattered showers (40%) Highs around 81°F. SW wind to 8 MPH
 Night: Partly cloudy w/scattered tstorms (30%). Lows around 66°F. S wind to 5 MPH

Saturday, July 1
 Day: Mostly cloudy w/scattered showers (50%) High 81°F. W wind to 7 MPH
 Night: Mostly cloudy w/scattered tstorms (40%) Low 66°F. WSW wind to 5 MPH

Sunday, July 2
 Day: Partly cloudy w/scattered showers (40%) High 81°F. W wind to 5 MPH
 Night: Partly cloudy w/scattered tstorms (30%) Low 64°F. WSW wind to 5 MPH

